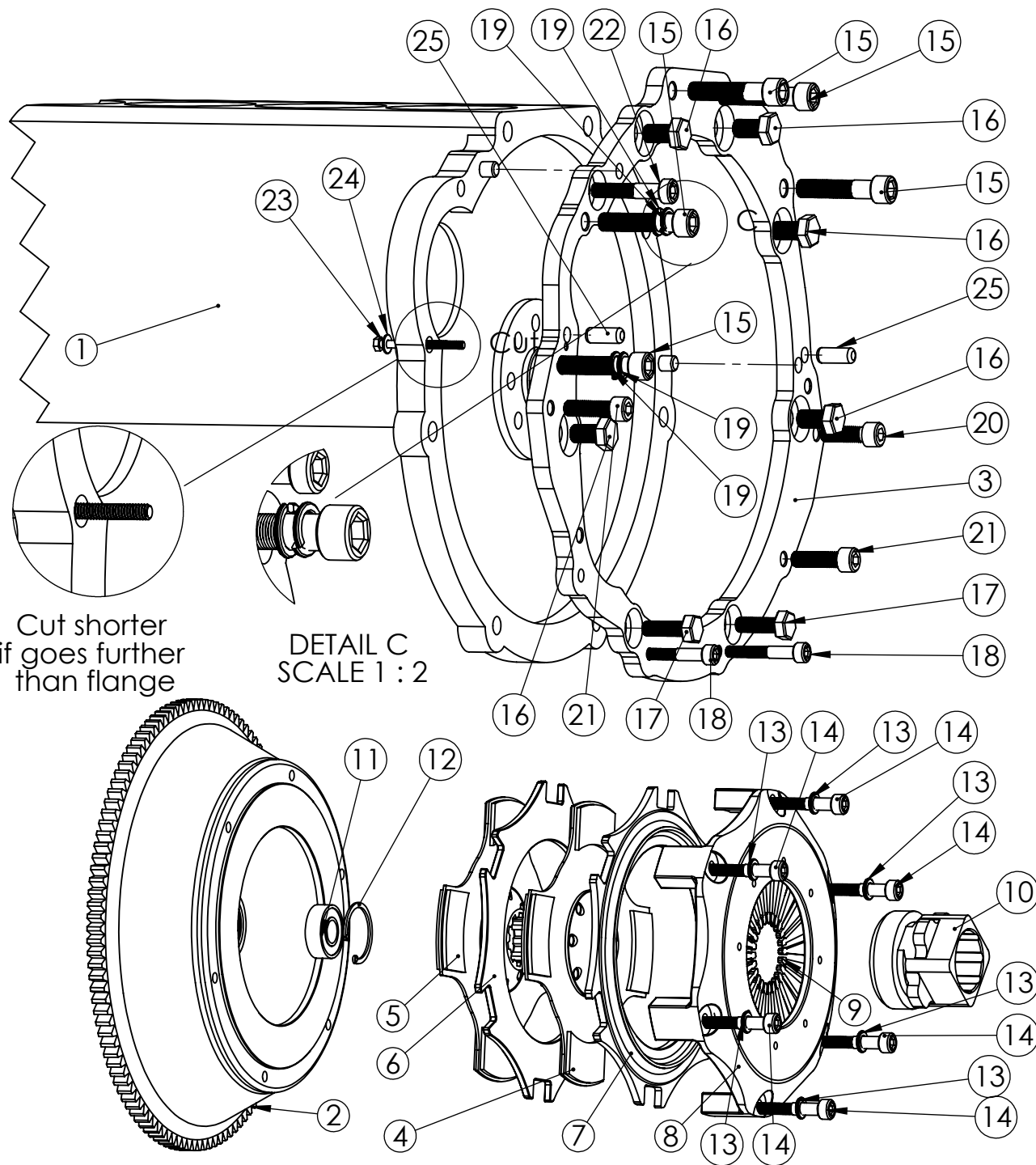


ABC Clutch - 2JZ/JZ_350Z installation manual



ABC Clutch SIA
 Upesgrīvas iela 47,
 Mārupe, Mārupes nov.,
 LV-2167
 LV50103645701
 00371 29125732
 sales@abc-clutch.com



Nr.	PART
1	Bloks
2	Flywheel(1pc)
3	Adapter flange(1pc)
4	Ceramic disc 1(1pc)
5	Ceramic disc 2(1pc)
6	Floater plate(1pc)
7	Press plate(1pc)
8	Clutch cover(1pc)
9	Diaphragm spring(1pc)
10	Throw out bearing(1pc)
11	Shaft bearing(1pc)
12	Snap ring(1pc)
13	8mmx2mm washer(6pc)
14	M8x1.25x50mm Cover Bolt, 25Nm(6pc)
15	M12x1.5x55mm Centric Bolt, 80Nm(5pc)
16	M12x1.25x20mm Bolt, 80Nm(5pc)
17	M10x1.25x20mm Bolt, 50Nm(2pc)
18	M8x1.25x45mm Bolt, 25Nm (2pc)
19	12mmx2mm washer (4pc)
20	M10x1.5x32mm, 50Nm Bolt,(1pc)
21	M10x1.5x35mm, 50Nm Bolt (2pc)
22	M10x1.25x50mm Starter Bolt, 50Nm (1pc)
23	M5x0.8x60mm, Starter bolt, 10Nm(1pc)
24	M5x1mm washer(1pc)
25	10mm axle pin (2pc)